

Week 9

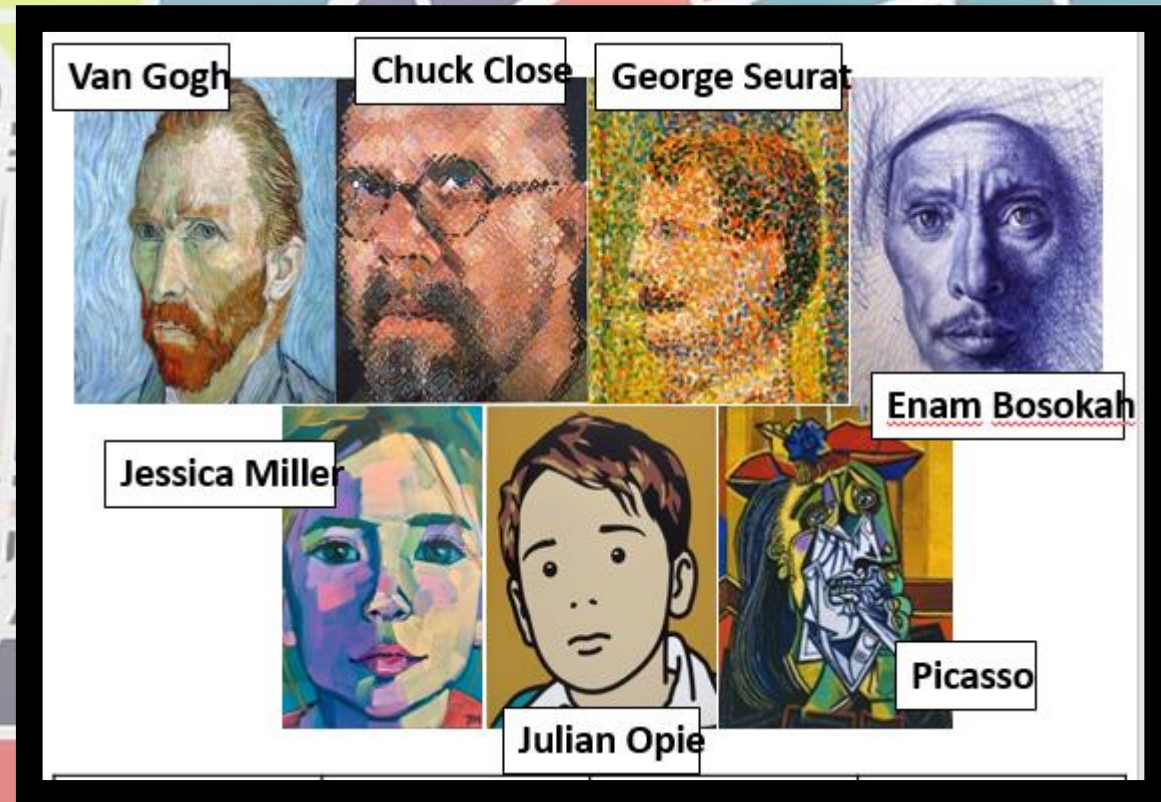
Progress File Task 1 -

Page 25

You will create a portrait in the style of three artists, select your three favorite and answer the questions.

Keywords:

1. Facial Features
2. Facial Proportions
3. Artist Style
4. Techniques
5. Portrait



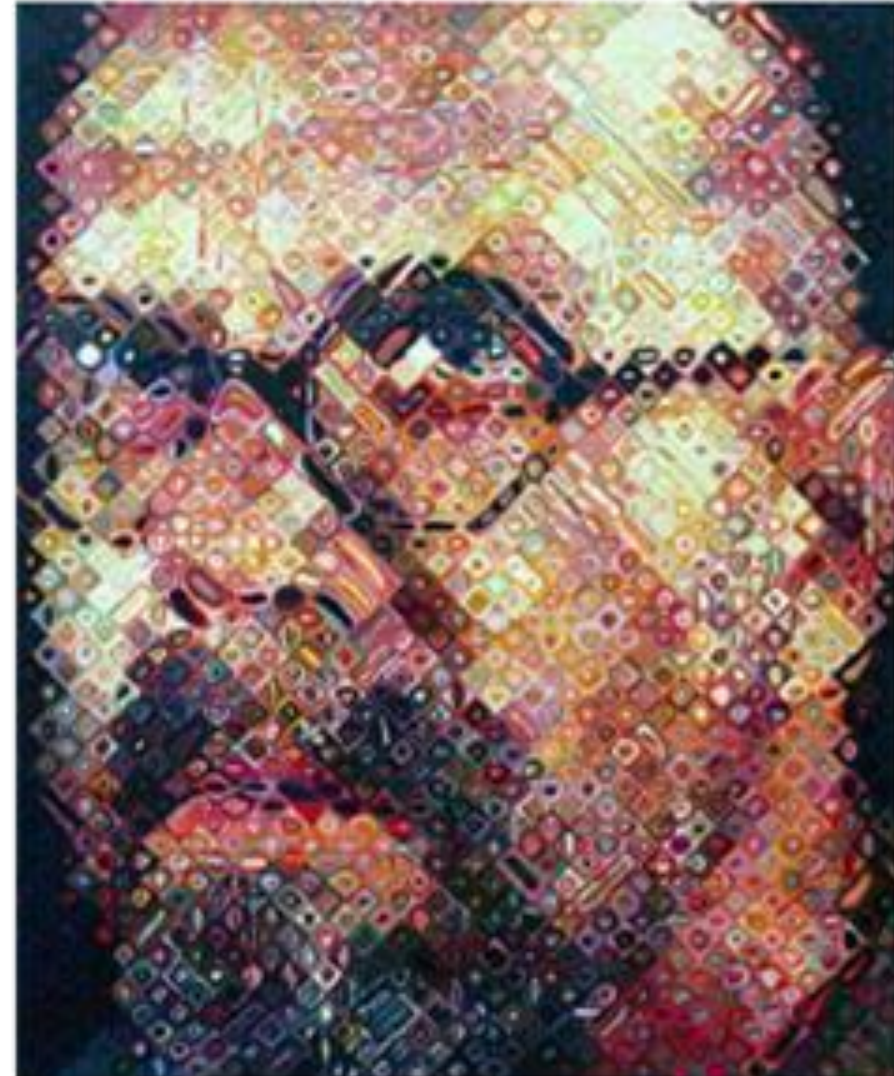
Chuck Close

1940-2021

Art Style – Photorealism

Chuck Close creates large scale paintings, starting by superimposing a grid pattern over a photograph and then transferring to a large canvas. He then applies acrylic paint using an air brush.

Up close his work looks like a pattern but from a distance a portrait is revealed



Julian Opie

1958 - present

Art Style – Pop Art

Julian Opie's work is usually of the human form and portraits. He creates simplified artwork using only essential lines which gives them a graphical or cartoon style. He prints his images using paint in block colours.

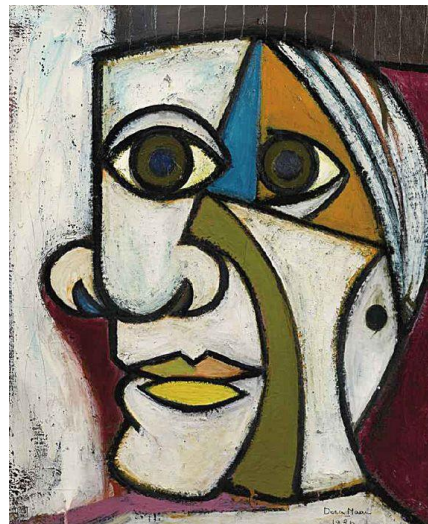


Pablo Picasso

1881 - 1973

Art Style – Cubism

Picasso was a sculptor, painter, ceramicists and printmaker. During his Cubist stage he created artwork where objects and portraits are broken apart and reassembled in an abstracted form using mainly geometric shapes. Picasso worked mainly in oil paint and would sometimes add sand to create texture.

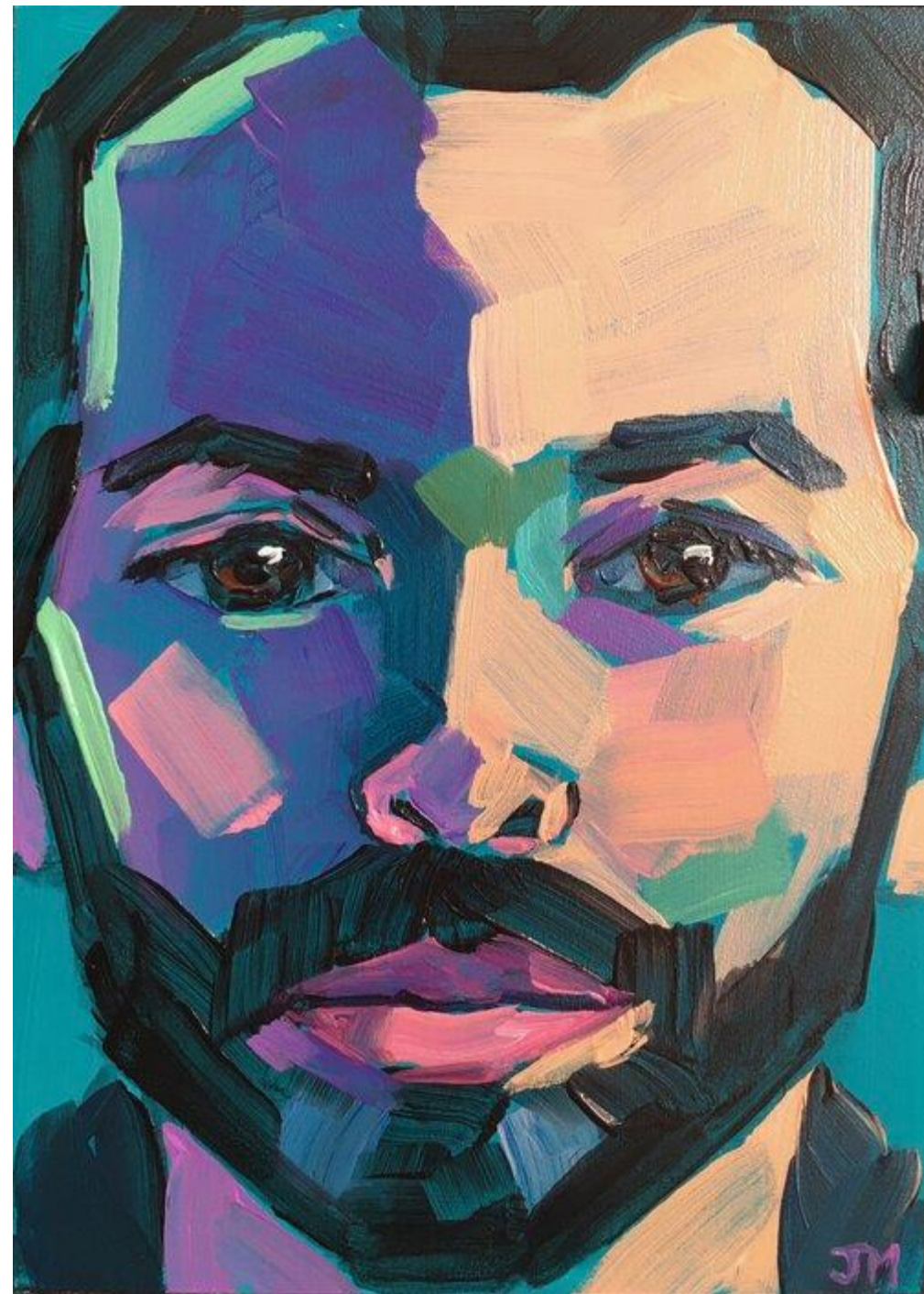


Jessica Miller

Current

Art Style – Contemporary

Jessica is known for her 'half-an hour' portraits, working quickly she starts out by drawing straight lines at the top, bottom and the sides, then cut in on key angles to define the shape. She then adds blocks of paint using large brush strokes in exaggerated colours.

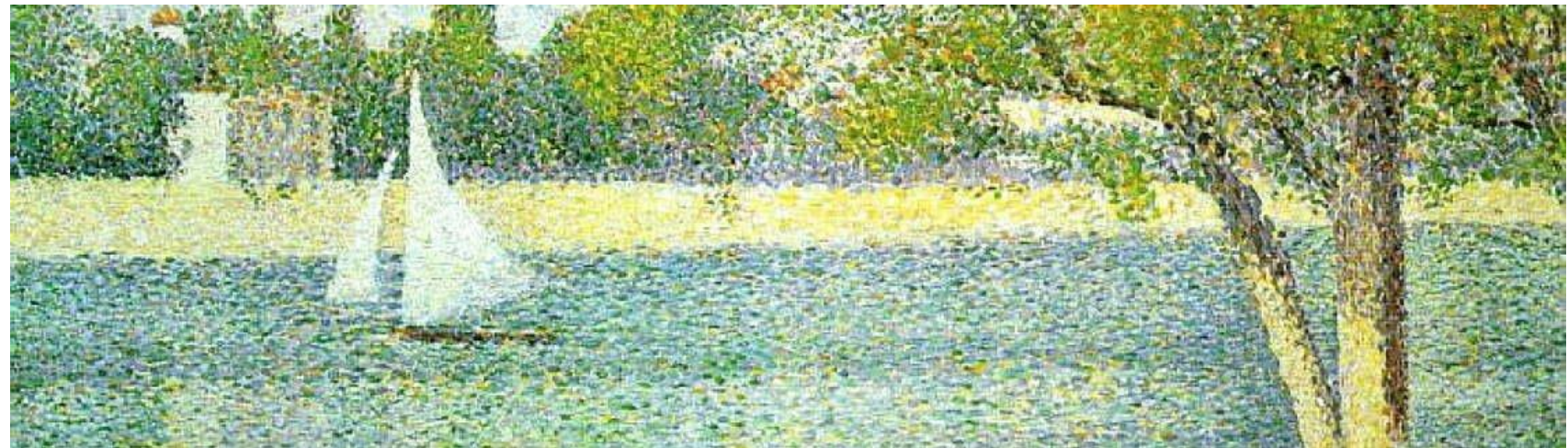


George Seurat

1859-1891

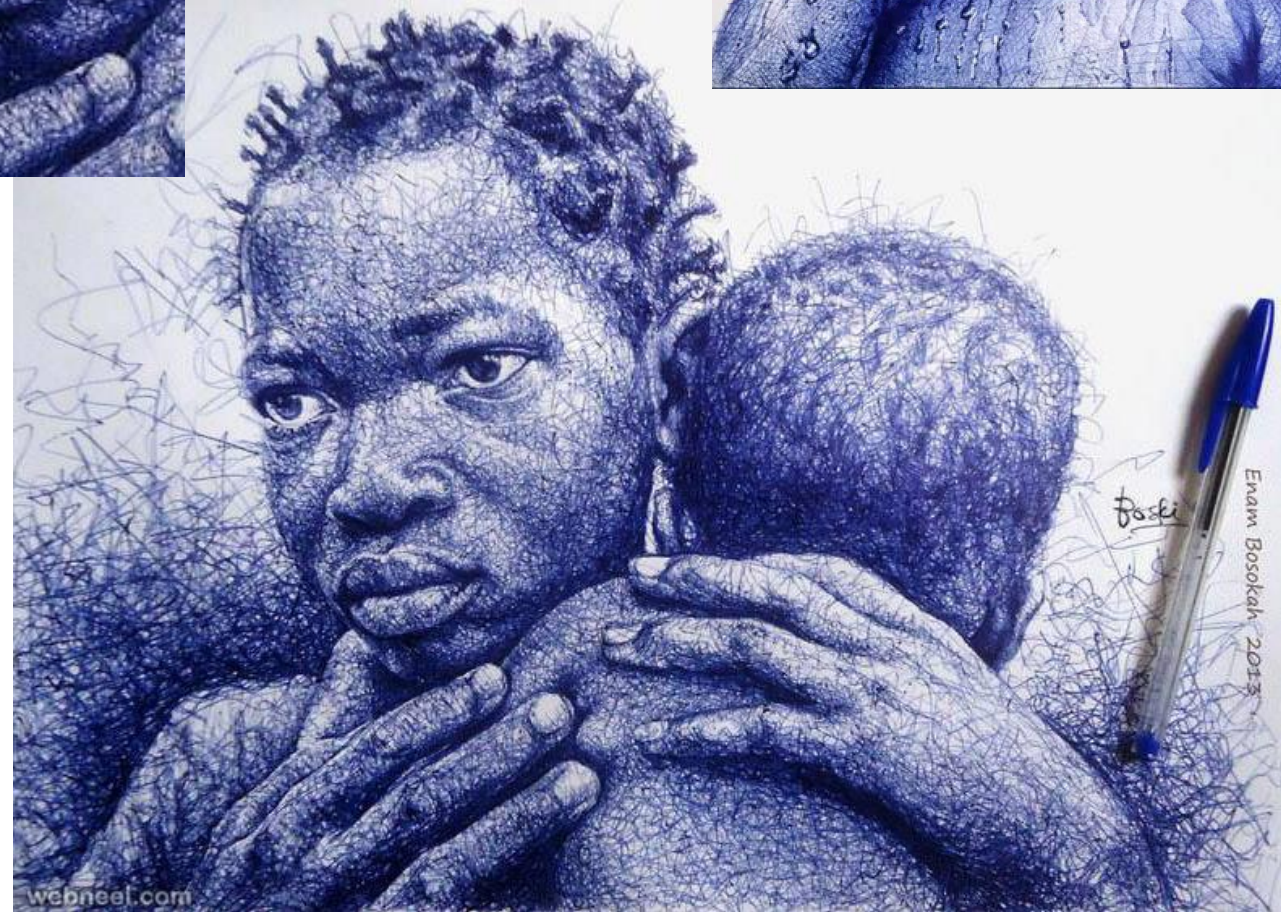
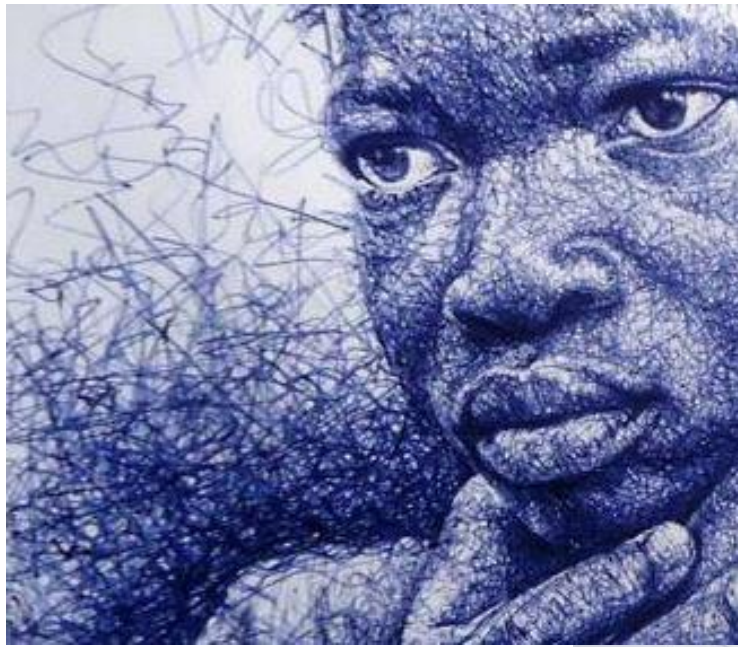
Art Style – pointillism

George created his work by overlaying dots. Rather than mixing the colors of paint on a palette, he placed tiny dots of different colors next to each other on the canvas and the eye would mix the colors.



Enam Bosokah
1988 - current
Art Style –
photorealism

Enam produces portraits using a ball point pen but they actually look like photographs! He uses multiple lines layered to create depth and tone within his work .

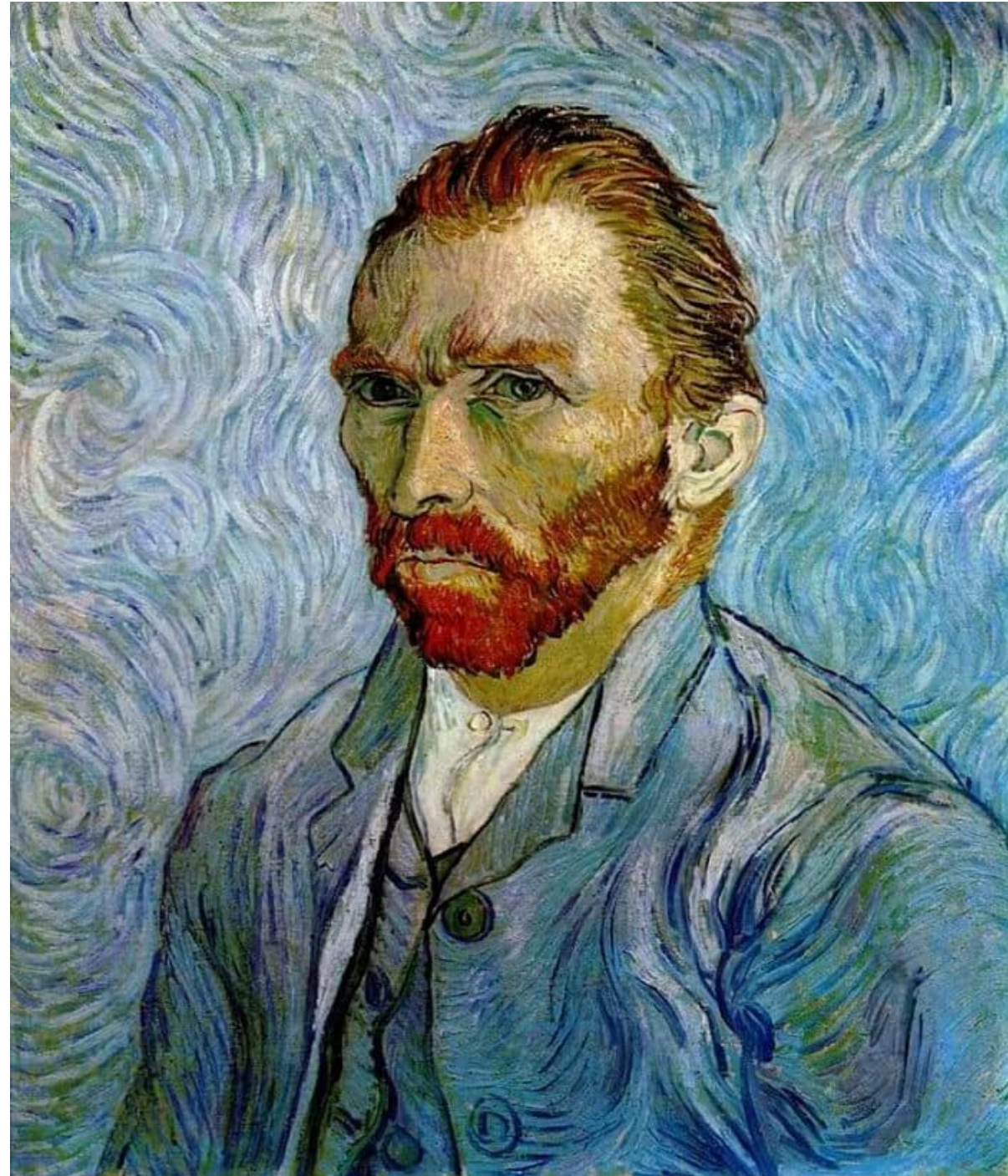
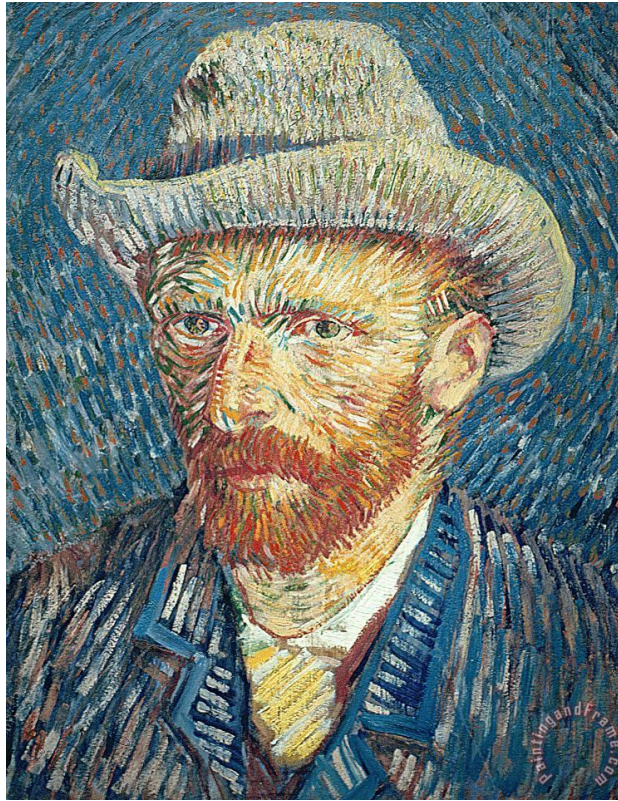


Van Gogh

1853 - 1890

**Art Style – post-
impressionism**

Van Gogh used
thick layers of
paint to express
his emotions
through bold
colors and
expressive brush
strokes

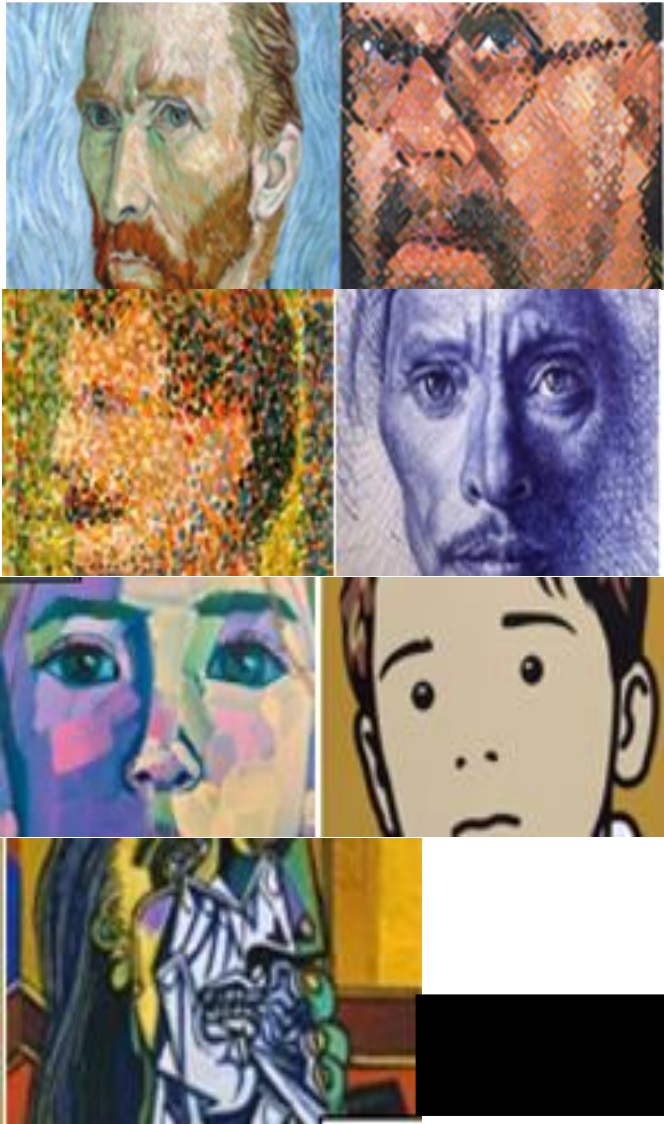


Week 8 - Lesson Objective:
Create a **simple** design showing each of
the artist styles you have chosen

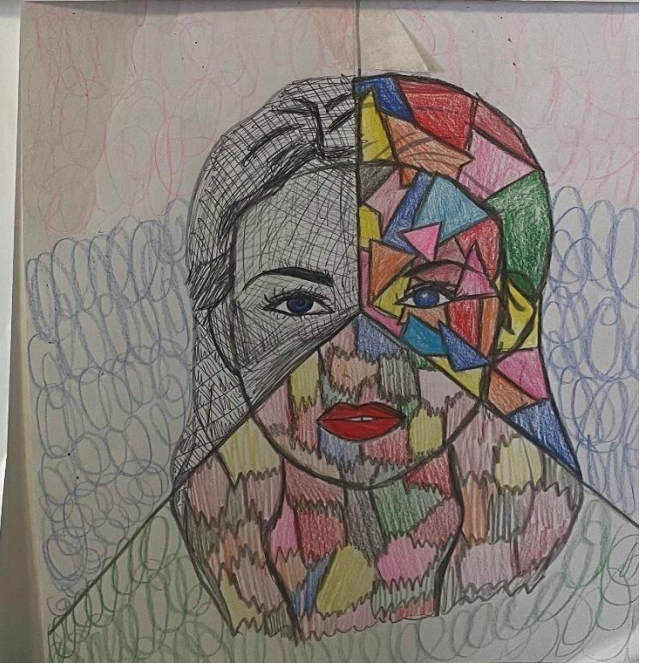
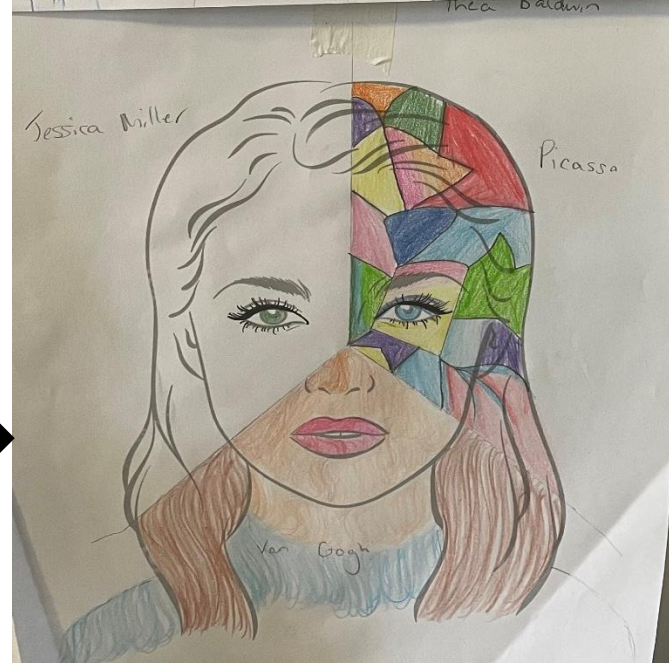
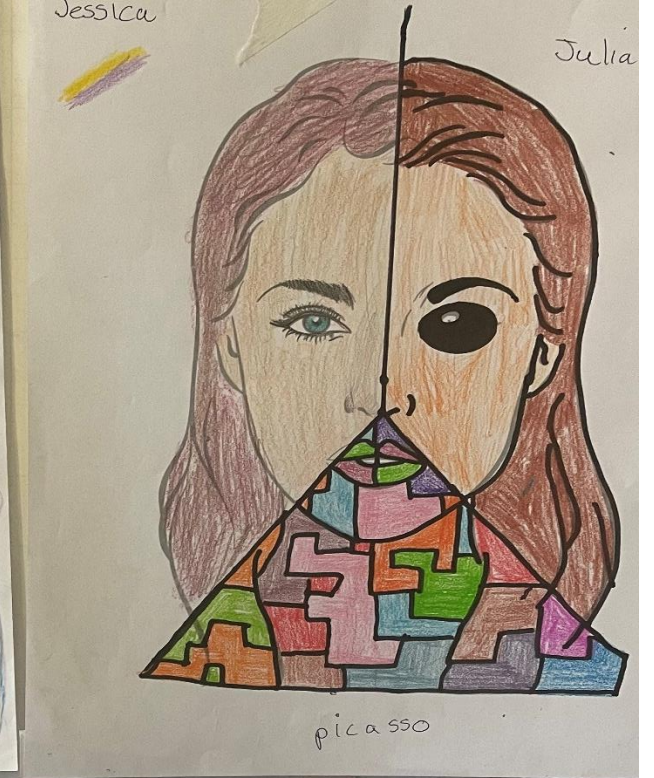
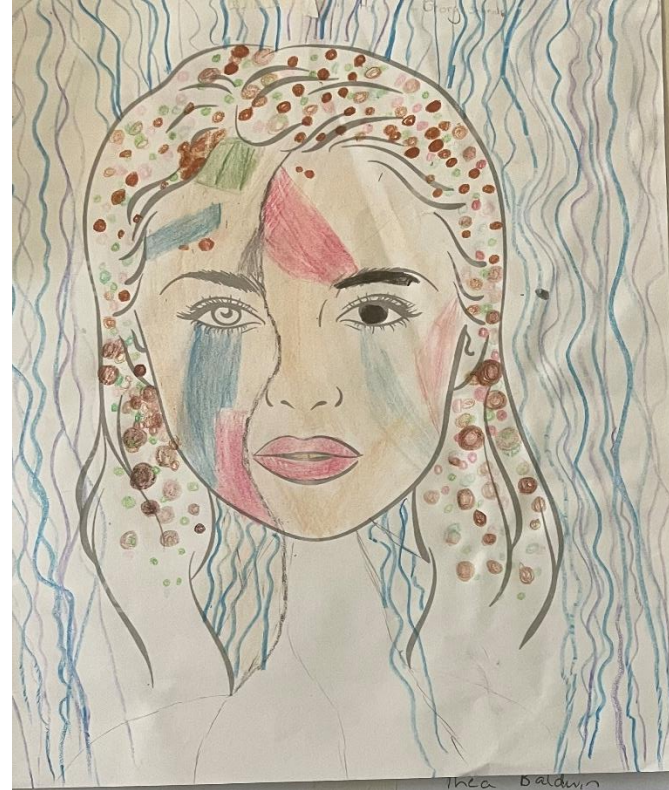
What is the style of the
artist you have chosen?
How will you recreate it?

What materials and
colours does the artist
use?





Use the
style of
your
chosen
artists to
create a
simple
design



Week 9

Progress File Task 2-

Page 26

Now you have chosen your three artists, analyse their work in more detail by completing the task

Keywords:

1. Facial Features
2. Facial Proportions
3. Artist Style
4. Techniques
5. Portrait



Week 9 - Lesson Objective:
Create a **simple** design showing each of
the artist styles you have chosen

What is the style of the
artist you have chosen?
How will you recreate it?

What materials and
colours does the artist
use?



Assessment Skill – Working in the style of an artist

To improve your work you now need to:

- ✓ Try to replicate the artist style more closely by using colours like their work
- ✓ Try to replicate the artist style more closely by using different shapes like their work
- ✓ Try to replicate the artist style more closely by using colours like their work
- ✓ Try to replicate the artist style more closely by using techniques like their work

Reflect and Review

Exit ticket page 9






Spend 5 minutes to think about your progress today. How did you feel about the lesson and why. Make sure you use full sentences and explain your reasons clearly

Name: _____
Date: _____
Period/Subject: _____
How do you feel about today's lesson?
  
Why?

Van Gogh



AO1 Artists Links and AO2 Development of Ideas

Exceptionally ability	
<ul style="list-style-type: none">✓ Exceptional ability to replicate the artist styles accurately including colour scheme and techniques✓ Exceptional creativity and thoughtful consideration of design✓ Exceptional painting skills displayed	
Developed ability	
<ul style="list-style-type: none">✓ Developed ability to replicate the artist styles accurately including colour scheme and techniques✓ Developed creativity and thoughtful consideration of design✓ Developed painting skills displayed	
Consistent ability	
<ul style="list-style-type: none">✓ Consistent ability to replicate the artist styles accurately including colour scheme and techniques✓ Consistent creativity and consideration of design✓ Consistent painting skills displayed	
Moderate ability	
<ul style="list-style-type: none">✓ Moderate ability to replicate the artist styles accurately including colour scheme and techniques✓ Moderate creativity and consideration of design✓ Moderate painting skills displayed	
Minimal ability	
<ul style="list-style-type: none">✓ Minimal ability to replicate the artist styles accurately including colour scheme and techniques✓ Minimal creativity and consideration of design✓ Minimal painting skills displayed	

Week 10

Reflect and Review

Self Assess: Page 27

Spend 5 minutes writing a PIN analysis to review your portrait design. Remember be constructive. Your feedback must be useful to help you make more progress. Be prepared to feedback to the class.



Reflective Learner

Peer Assessment PIN analysis: Write using full sentences

Piece of work	Date:
P: Praise What is successful about this work and why?	
I: Immediate What immediate thing they could focus on to make an immediate improvement to their work?	
N: Next Steps Going forward with this skill/work what do you think are their next steps to ensure this work is of the highest quality	

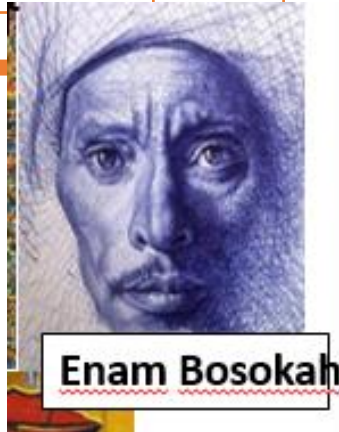
Home Learning

Why will it benefit you?

Assessment Objective 1 Develop skills in how to produce an artist links sheet.

Task

Produce an observational drawing of a pair of shoes using a pen in the style of Enam Bosokah



Pair of shoe observational drawing

It is your responsibility to –

- Hand the home learning in on time.
- Complete work to the best of your ability.
- Present work to a high standard.
- Actively seek support if needed before the deadline.



Support/Recommended resources –

Literacy support sheets, images provided.

Date given –

Hand in date –

Week 10 - Lesson Objective:
Create a simple design showing each of
the artist styles you have chosen

What is the style of the
artist you have chosen?
How will you recreate it?

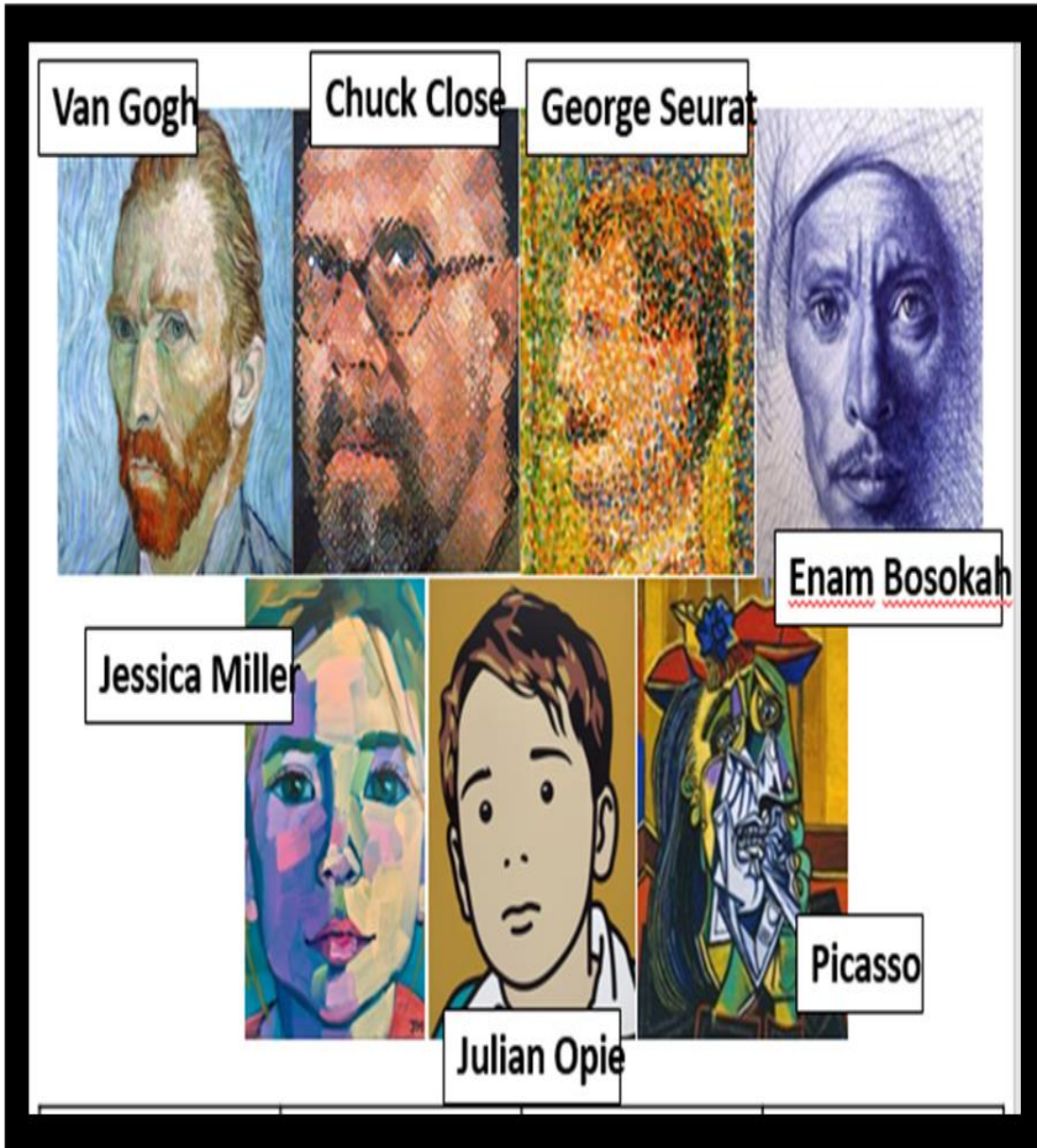
What materials and
colours does the artist
use?



Assessment Skill – Working in the style of an artist

To improve your work you now need to:

- ✓ Try to replicate the artist style more closely by using colours like their work
- ✓ Try to replicate the artist style more closely by using different shapes like their work
- ✓ Try to replicate the artist style more closely by using techniques like their work
- ✓ Work on improving the quality of your work, this will improve the overall finish of the piece



Reflect and Review – Page 11

Complete an exit ticket based on today's lesson. You must complete:

1. Thing you have a question about
2. 2 things you have learned
3. 3 things you know you could improve

Chuck Close



Exit Ticket

Date.....

1 thing I have a question about

--

2 things I have learned

--	--

3 things I know I can improve

--	--	--

Week 11

Mark Home Learning



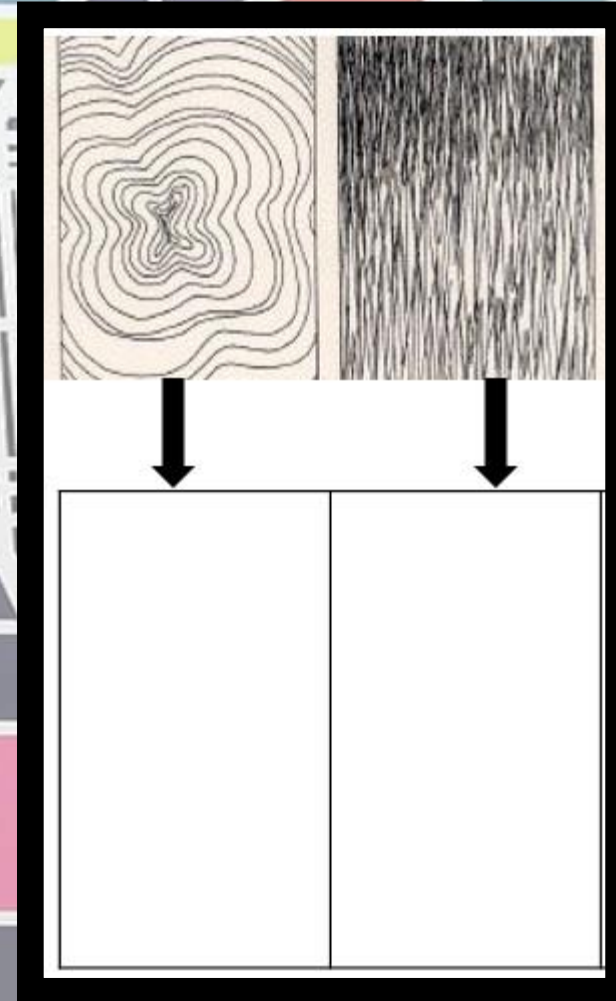
Progress File

Page 30

use your pencil to carefully recreate the textures below. Consider the pressure you use to create dark, medium and light lines and also experiment with the thickness of the lines you use.

Keywords:

1. Facial Features
2. Facial Proportions
3. Artist Style
4. Techniques
5. Portrait



Week 11 - Lesson Objective:
Create an accurate oil transfer print of a portrait.

What colour oil pastel would be the most appropriate?

How much of the portrait do you need to draw?

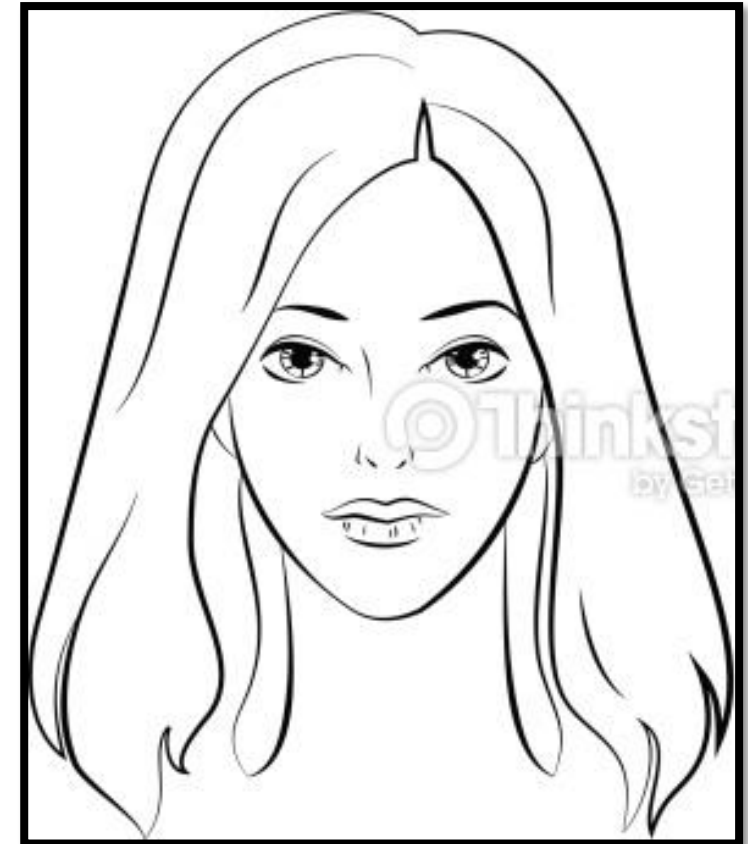


Oil Pastel Transfer Step-by-step Guide

1. Use an oil pastel to colour all over the **BACK** of your portrait photograph

2. Paperclip your photograph to an A3 piece of cartridge paper.
DO NOT MOVE THE PHOTOGRAPH ONCE YOU HAVE PAPERCLIPPED IT INTO PLACE!

3. Using a pen draw around the whole outline of your portrait.
DO NOT MOVE YOUR PHOTOGRAPH UNTIL YOU HAVE COMPLETED THE WHOLE DRAWING!!



Assessment Skill – Working in the style of an artist

To improve your work you now need to:

- ✓ Try to replicate the artist style more closely by using colours like their work
- ✓ Try to replicate the artist style more closely by using different shapes like their work
- ✓ Try to replicate the artist style more closely by using colours like their work
- ✓ Try to replicate the artist style more closely by using techniques like their work

Assessment Skill – Painting Skills

To improve your work you now need to:

- ✓ You need your paint to be thicker, try using less water
- ✓ You need to add another layer of paint onto your work to give you a block colour
- ✓ Consider the colours you are using, try mixing your own colours
- ✓ Make sure you select an appropriate brush size for the area you are painting

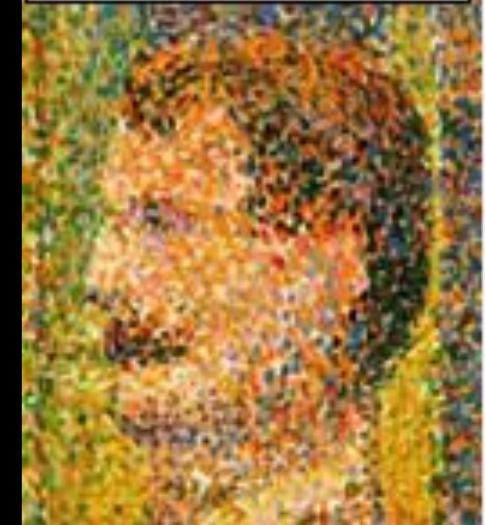
Week 11

Progress File Task - Page 29

Attitude To Learning

So learning is about so much more than just being here, it's about being the best student you can. Giving your best effort 100% of the time, even when you may find things tough! For the next 10 minutes I want you to really think hard and reflect on your 5 R's. What progress are you making and how does your attitude towards your learning affect this? Give yourself a score of 1-4 for each R. Below each score set yourself a target to improve. If you are a 1, explain why.

George Seurat



Week 12

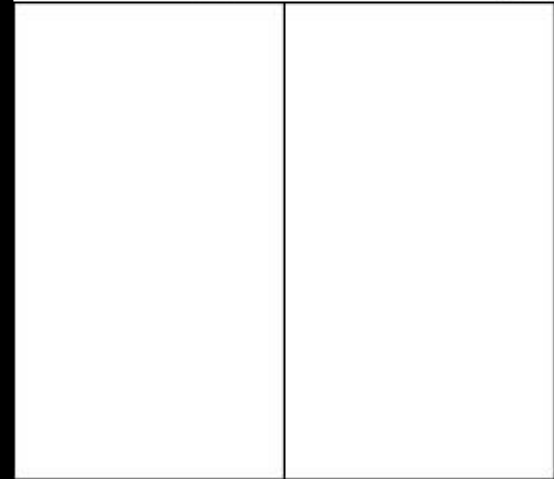
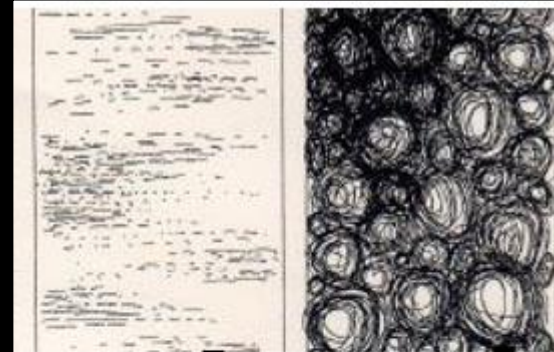
Progress File

Page 30

use your pencil to carefully recreate the textures below. Consider the pressure you use to create dark, medium and light lines and also experiment with the thickness of the lines you use.

Keywords:

1. Facial Features
2. Facial Proportions
3. Artist Style
4. Techniques
5. Portrait



Home Learning

Shoe Observational Drawing

Why will it benefit you?

Assessment Objective 1 Develop skills in how to produce an artist links sheet.

It is your responsibility to –

- Hand the home learning in on time.
- Complete work to the best of your ability.
- Present work to a high standard.
- Actively seek support if needed before the deadline.

Task:

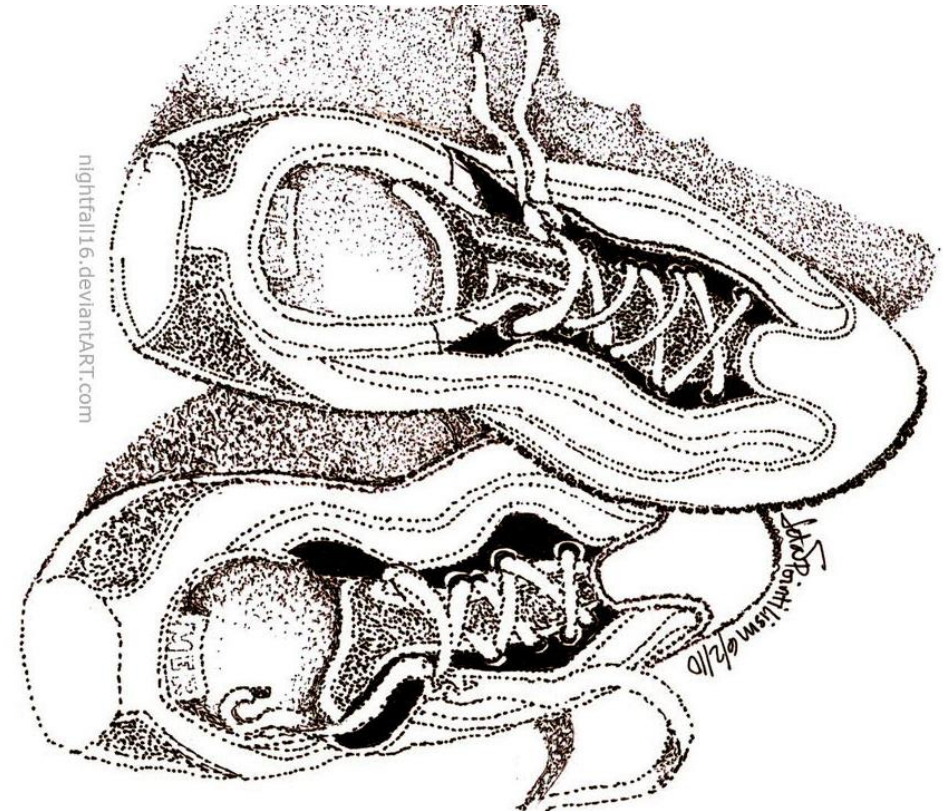
Produce an observational drawing of a pair of shoes using pointillism in the style of George Seurat

Date given –

Hand in date –

Support/Recommended resources –

Literacy support sheets, images provided.

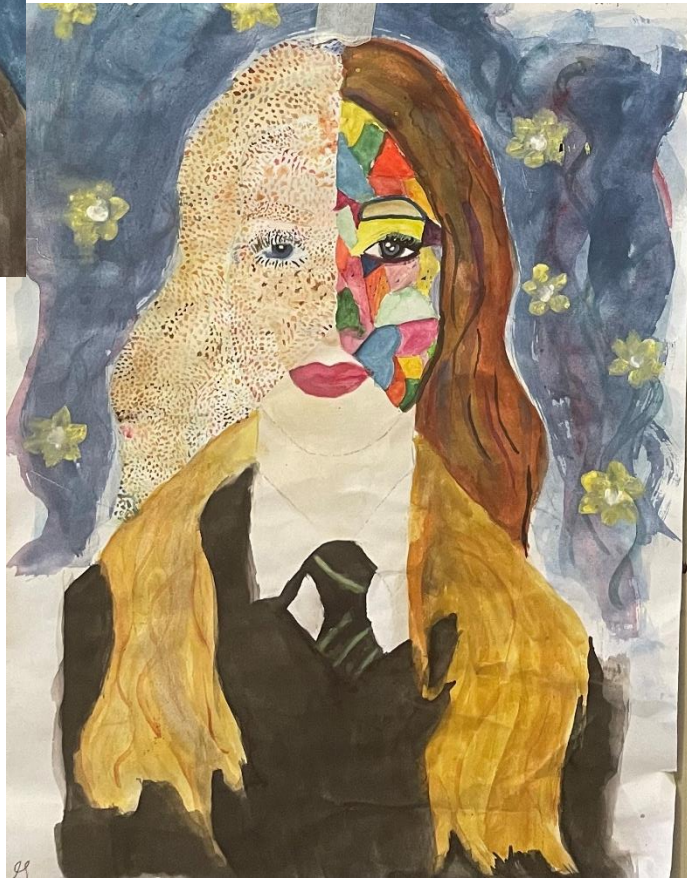


Week 12 - Lesson Objective:
Create your portrait artwork combining
three artist styles

What styles do my
selected artist use?

How can I ensure my
work is creative?





Assessment Skill – Working in the style of an artist

To improve your work you now need to:

- ✓ Try to replicate the artist style more closely by using colours like their work
- ✓ Try to replicate the artist style more closely by using different shapes like their work
- ✓ Try to replicate the artist style more closely by using colours like their work
- ✓ Try to replicate the artist style more closely by using techniques like their work

Assessment Skill – Painting Skills

To improve your work you now need to:

- ✓ You need your paint to be thicker, try using less water
- ✓ You need to add another layer of paint onto your work to give you a block colour
- ✓ Consider the colours you are using, try mixing your own colours
- ✓ Make sure you select an appropriate brush size for the area you are painting

Reflect and Review

Exit ticket page 9

Spend 5 minutes to think about your progress today. How did you feel about the lesson and why. Make sure you use full sentences and explain your reasons clearly

Name: _____
Date: _____
Period/Subject: _____
How do you feel about today's lesson?
  
Why?

Jessica Miller



Week 13

Mark Home Learning



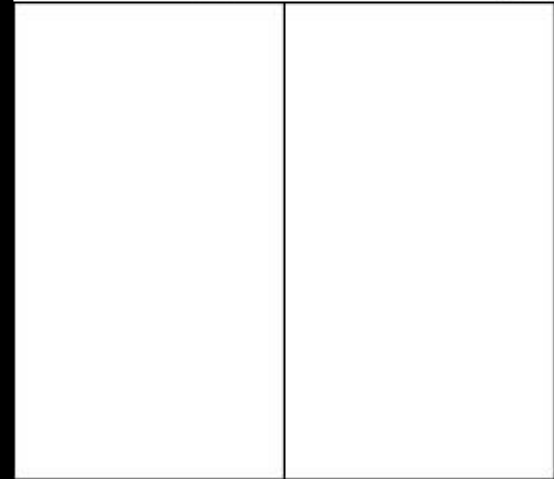
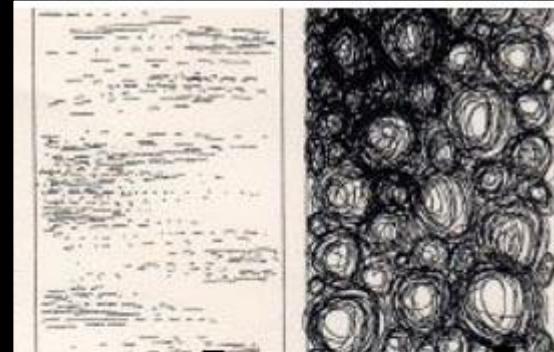
Progress File

Page 30

use your pencil to carefully recreate the textures below. Consider the pressure you use to create dark, medium and light lines and also experiment with the thickness of the lines you use.

Keywords:

1. Facial Features
2. Facial Proportions
3. Artist Style
4. Techniques
5. Portrait



Week 13 - Lesson Objective:
Create your portrait artwork combining
three artist styles

What styles do my
selected artist use?

How can I ensure my
work is creative?



Assessment Skill – Working in the style of an artist

To improve your work you now need to:

- ✓ Try to replicate the artist style more closely by using colours like their work
- ✓ Try to replicate the artist style more closely by using different shapes like their work
- ✓ Try to replicate the artist style more closely by using colours like their work
- ✓ Try to replicate the artist style more closely by using techniques like their work

Assessment Skill – Painting Skills

To improve your work you now need to:

- ✓ You need your paint to be thicker, try using less water
- ✓ You need to add another layer of paint onto your work to give you a block colour
- ✓ Consider the colours you are using, try mixing your own colours
- ✓ Make sure you select an appropriate brush size for the area you are painting

Week 13

Reflect and Review

Self Assess: Page 32

Spend 5 minutes writing a PIN analysis to review your portrait design. Remember be constructive. Your feedback must be useful to help you make more progress. Be prepared to feedback to the class.



Reflective Learner

Peer Assessment PIN analysis: Write using full sentences

Piece of work	Date:
P: Praise What is successful about this work and why?	
I: Immediate What immediate thing they could focus on to make an immediate improvement to their work?	
N: Next Steps Going forward with this skill/work what do you think are their next steps to ensure this work is of the highest quality	

Week 14

Progress File

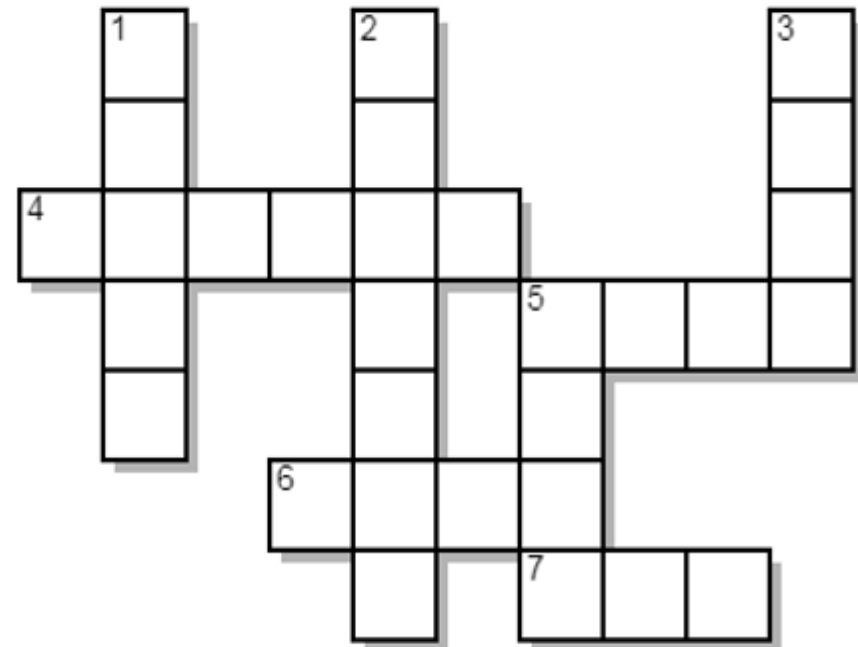
Page 31

Complete the crossword on facial proportions

Keywords:

1. Facial Features
2. Facial Proportions
3. Artist Style
4. Techniques
5. Portrait

Task: complete the crossword below to test your knowledge of where facial features are situated on the face.



Week 14 - Lesson Objective:
Create your portrait artwork combining
three artist styles

What styles do my
selected artist use?

How can I ensure my
work is creative?



Assessment Skill – Working in the style of an artist

To improve your work you now need to:

- ✓ Try to replicate the artist style more closely by using colours like their work
- ✓ Try to replicate the artist style more closely by using different shapes like their work
- ✓ Try to replicate the artist style more closely by using colours like their work
- ✓ Try to replicate the artist style more closely by using techniques like their work

Assessment Skill – Painting Skills

To improve your work you now need to:

- ✓ You need your paint to be thicker, try using less water
- ✓ You need to add another layer of paint onto your work to give you a block colour
- ✓ Consider the colours you are using, try mixing your own colours
- ✓ Make sure you select an appropriate brush size for the area you are painting

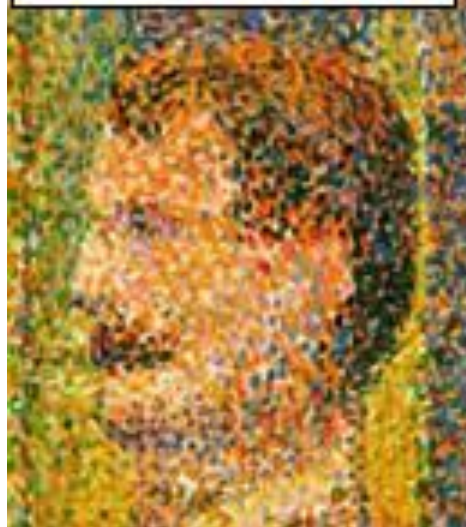
Reflect and Review

Peer discussion – two stars and a wish

In pairs discuss your work, give your peer feedback.

State two things you like about their work and highlight one thing you feel they could improve

George Seurat



Two Stars & a Wish



★ I really like the way you ...

★ I really like how you ...

★ I noticed you ...

★ My favourite part was when ...

★ I think the best thing about it was ...

★ It was interesting how you...

★ You grabbed my attention when ...

★ You should be proud of ...

★ It would be great if you...

★ I think you might want to ...

★ I would recommend it if you...

★ Next time maybe you could try ...

★ You can improve by...

★ It would be even better if you...

Assessment Skill – Working in the style of an artist

To improve your work you now need to:

- ✓ Try to replicate the artist style more closely by using colours like their work
- ✓ Try to replicate the artist style more closely by using different shapes like their work
- ✓ Try to replicate the artist style more closely by using colours like their work
- ✓ Try to replicate the artist style more closely by using techniques like their work

Assessment Skill – Painting Skills

To improve your work you now need to:

- ✓ You need your paint to be thicker, try using less water
- ✓ You need to add another layer of paint onto your work to give you a block colour
- ✓ Consider the colours you are using, try mixing your own colours
- ✓ Make sure you select an appropriate brush size for the area you are painting

Assessment Skill – Creativity

To improve your work you now need to:

- ✓ Your artwork lacks imagination, try to be more creative with how your
- ✓ Remember blend pastel by layering, do not use your finger!
 - ✓ Use lighter colours first and layer darker colours on top lightly
- ✓ Don't be scribbly, consider the direction of your blending.
Carefully study your eye image