



GCSE ART-

Throughout the next two years you will build a portfolio of art work. This will be made up of the following:

Supporting work- (all students are required to complete this) You need a selection of art work to support your main coursework project. This can be made up of variety of pieces of art work and does not have to meet all of the assessment objectives. You will begin your supporting work in the first half term. You will also complete a selection of home learning task throughout the year that will be added to your supporting portfolio.

Coursework (theme to be decided) - This is your major project and is worth 60% of your final grade. Your coursework has to fulfil the requirements of each assessment objective which are:

A01: Artist links=15%
A02: Development=15%
A03: Observations=15%
A04: Final Piece=15%

All objectives are equally weighted

Exam Project (theme decided by AQA)- This is your externally set project and is worth 40% of your final grade, this will take place over 8-10 weeks. Again this has to fulfil all assessment objectives. In the 8-10 weeks you will work on A01, A02 and A03 in lesson with your teacher. The final objective A04 final piece is sat as a 10hr exam.

A01: Artist links=10%
A02: Development=10%
A03: Observations=10%
A04: Final Piece=10%

All objectives are equally weighted

Supporting work

Over the first half term you will complete a number of task based around distorted portraits which will allow you to use and develop a variety of skills and techniques in art. This work will become you supporting portfolio which every student is required to have to pass the course.



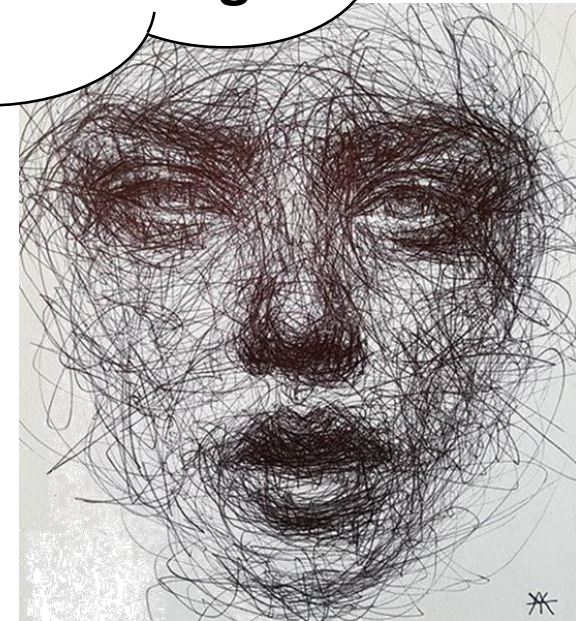
Week 1 Lesson Objective:

**Build confidence in drawing ability by
trailing a range of drawing techniques**

**Why doesn't my
study look like a
portraits straight
away?**



**How can you show a
range of textures and
shades with the
technique you are using**



Home Learning

Observational Photographs

Why will it benefit you?

*Develop your observational drawing skills for Assessment
Objective 3*

It is your responsibility to –

- Hand the home learning in on time.
- Complete work to the best of your ability.
- Present work to a high standard.
- Actively seek support if needed before the deadline.

Task

**Create an portrait study
using one of the following
techniques:**

- ✓ **Pen study**
- ✓ **Pencil study**
- ✓ **Continuous line drawing**
- ✓ **‘wrong hand’ drawing**

Date given –

Hand in date –

23rd Sept

Support/Recommended resources –



Lesson two-: Distorted Portraits Mini Project



Create 3 torn photo montages

What makes
a successful
photo
montage?

- ✓ Creative composition-
carefully selected sections
of face torn and placed at
different angles
- ✓ The use of two similar
sized images so that lines
of features can match up
- ✓ Interesting torn edges

Lesson three-: Distorted Portraits Mini Project

Create two photo montages using straight lines



What makes
a successful
photo
montage?

- ✓ Neat composition
- ✓ Straight even lines
- ✓ Precise cutting

→ Next try horizontal lines or diagonal lines

Lesson four-: Distorted Portraits Mini Project

Create two photo montages using different sections of the face



What makes
a successful
photo
montage?

- ✓ Interesting compositions
- ✓ Varied sizes
- ✓ Precise cut out areas
- ✓ Multiple features
- ✓ Different angles

Lesson five and six-: Distorted Portraits Mini Project

Create a detailed cut out portrait



What makes
a successful
cut out
portrait

- ✓ Interesting design
- ✓ Well planned out
- ✓ Precise cut out areas
- ✓ Contour Lines
- ✓ Different angles

Lesson seven and eight-: Distorted Portraits Mini Project

Create a detailed pattern line drawing

To improve your work you now need to:

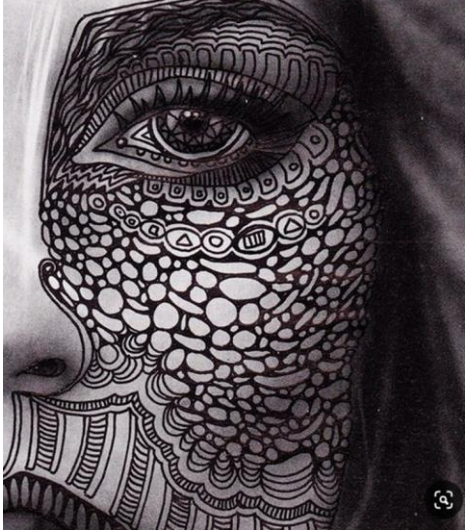


- ✓ Add more detail to your design to make it more intricate
- ✓ Use a range of thicknesses to your lines to make the shapes more effective
- ✓ Develop the outline shape to make it a more interesting
- ✓ Add geometric shapes to your design
- ✓ Add a second colour to your design

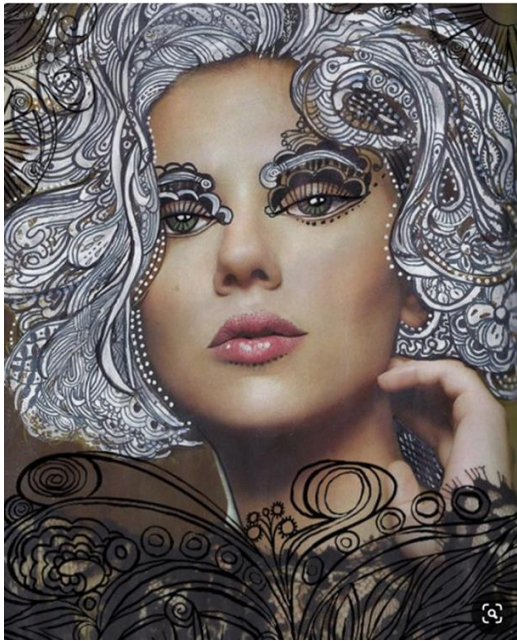
Lesson nine and ten-: Distorted Portraits Mini Project

Create a detailed pattern line drawing

Choice 1



Choice 2



What makes
a successful
line drawing

- ✓ Interesting composition
- ✓ Interesting design
- ✓ Well planned out
- ✓ Detail
- ✓ Interesting shapes
- ✓ Successful size

A patterned
close up section

Patterned sections

Lesson eleven-fourteen-: Distorted Portraits Mini Project

Create two detailed pencil studies from two different photos. One must be done in pencil the other using a colour pencil crayon to create contrast.



- ✓ Interesting composition
- ✓ Detail
- ✓ Accurate detailed drawings Shading shows multiple tones

What makes a successful pencil study?

To improve your work you now need to:

- ✓ Correct the outline of your drawing to make it accurate
- ✓ Use your pencil lightly to create a more delicate study
- ✓ Add a range of different tones of shading to make your work look three dimensional
- ✓ Try to shade in circles to give your study a smooth finish
- ✓ Create different marks with your pencil to give your work texture

Home Learning

Observational Photographs

Why will it benefit you?

Develop your observational drawing skills for Assessment Objective 3

It is your responsibility to –

- Hand the home learning in on time.
- Complete work to the best of your ability.
- Present work to a high standard.
- Actively seek support if needed before the deadline.

Task

Create an portrait study using one of the following techniques:

- ✓ **Pen study**
- ✓ **Pencil study**
- ✓ **Colour study**

Date given –

Hand in date –

14th Oct

Support/Recommended resources –



Lesson Objective:

**Develop observational drawing skills using
pencil**

**Consider shading techniques, mark making
techniques to create texture**

**Why can you
ensure your study
looks realistic**



**How can you
develop smooth
shading**